

## MRS. POMEROY'S PAVANE

( or "Bridgewater's Gain" )

for Doris.

*d* = 95 Lyrical,  
but not too slow

## INTRODUCTION

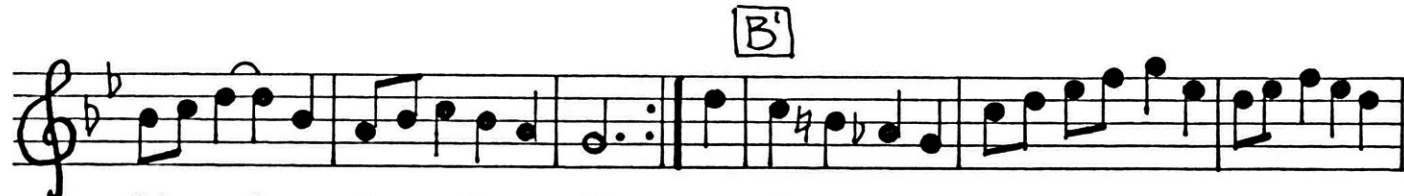


Bb D7 Gm



A

Gm Gm Gm Eb F

B<sup>1</sup>

Bb Gm Cm D7 Gm G7 Cm Fm G7

B<sup>2</sup>

Cm Cm F Bb Eb F7 Bb Bb Eb Bb



Gm D Eb Cm D (Eb) Bb D7 Gm

PLAY  
INTRO,  
then  
3xAAB

3 couple longways set (couple 2 improper)

Introduction (first time only): All step R and honour ptn.

A1 All half RH turn. Keeping hand, balance forward R&L to ptn, finish the RH turn, and turn single L.

A2 Gipsy ptn Lsh, take hands-6 and circle halfway to the R, middles moving in so that the lines end close.

B1 Lines fall back, come forward, and all acknowledge ptn. Those who can, face on the L diagonal and cross Rsh, and all turn R to face ptn (couples 1&3 are now facing ptn on the sides of the set, and couple 2 are facing on the long diagonal). All set R&L to ptn.

B2 Ptns back to back Rsh (couple 2 on the diagonal) and face across the set (this is new ptn). Cross Rsh and turn R to face. Step R and honour.

Repeat the dance twice.