

JINKY'S TUNES - sometimes used for the MORRIS
WAIT FOR THE WAGGON - Ganiford & Schofield 1936 - noticeably different
from Buckley's original

Musical notation for 'Wait for the Waggon'. It consists of two staves. The first staff is in treble clef with a key signature of one sharp (F#) and a common time signature. The second staff is in bass clef. The music is written in a simple, folk-like style.

HARVEST HOME - as above:

Musical notation for 'Harvest Home'. It consists of three staves. The first staff is in treble clef with a key signature of one sharp (F#) and a common time signature. The second and third staves are in bass clef. The music is written in a simple, folk-like style.

DEAR OLD HOME - Sharp 1909 - words in Folk Songs of Upper Thames.

Musical notation for 'Dear Old Home'. It consists of two staves. The first staff is in treble clef with a key signature of one sharp (F#) and a common time signature. The second staff is in bass clef. The music is written in a simple, folk-like style.

STEP AND FETCH HER - Schofield 1937

Musical notation for 'Step and Fetch Her'. It consists of two staves. The first staff is in treble clef with a key signature of one sharp (F#) and a common time signature. The second staff is in bass clef. The music is written in a simple, folk-like style.

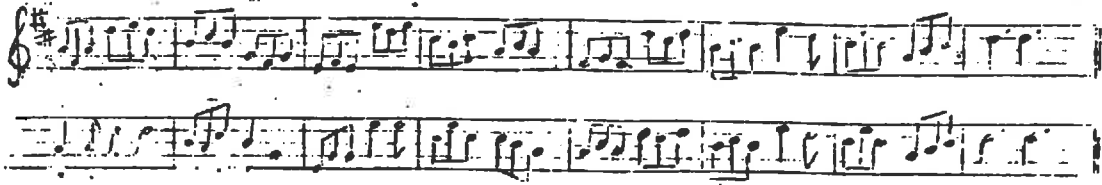
LITTLE BO PEEP - ditto

Musical notation for 'Little Bo Peep'. It consists of three staves. The first staff is in treble clef with a key signature of one sharp (F#) and a common time signature. The second and third staves are in bass clef. The music is written in a simple, folk-like style.

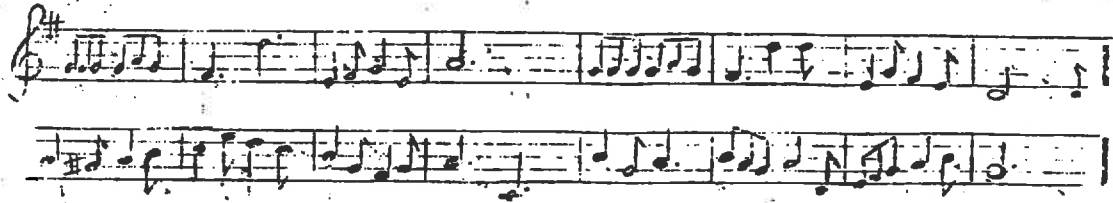
SOLDIER'S JOY - ditto

Musical notation for 'Soldier's Joy'. It consists of two staves. The first staff is in treble clef with a key signature of one sharp (F#) and a common time signature. The second staff is in bass clef. The music is written in a simple, folk-like style.

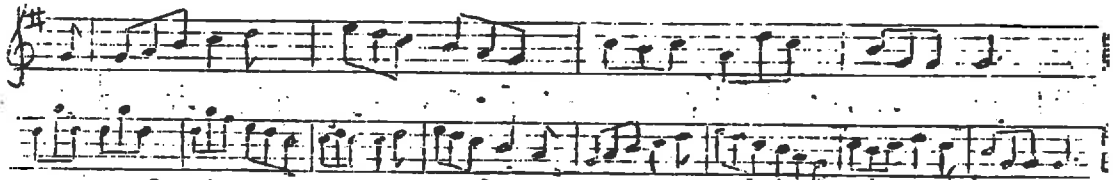
UNDER THE OLD MYRTLE TREE - Sharp 1909



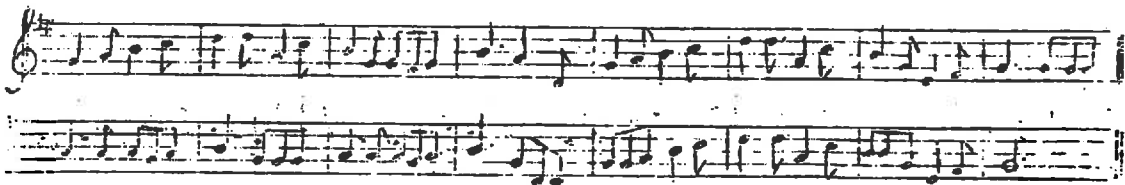
TOMMY MAKE ROOM FOR YOUR UNCLE



OLD WOMAN TOSSED UP - Giles tunebook c.1940 - words in Williams



WILLOW TREE - Carter from Tanner - 1897 - words exist



BOB AND JOAN - ditto

