

LINGDALE

Examination of EFDSS film taken c.1936. Looked at on 9th, 11th Feb 70.

Title

English Traditional Sword Dances

Title

Lingdale Primrose (Long Sword Figs 1 - 6)

Costume

White shirts, dark trousers held up by belt. No. 4 wears cloth cap. No. 1 going bald.

Quality

Opening shot good exposure, rest underexposed, three figures filmed. At one point a few frames missing, joins usually good.

Characters

Tommy & Betty who join in third figure. Accordion player.

FIGURE ONE

- . All face clockwise holding sword in right hand.
- High Salute - raise swords in bars 5-6 & hold the basket for 7-8.
- High Clash - clash on each step - walk step - start left foot. It is a left foot dance. 8b.
- Inside Shoulders - 8b - breaking into springy walk (almost run)
- Outside Shoulders - 8b
- Elbows - 8b - swords in ring horizontal - at waist level - wrist over elbow but elbow forward a handlength *from side of body*
- Over Own Sword - 32b - each man takes 10 steps. Like this - ring circles at same speed as before

1 r/l r/l r/l hl/r hr/l r/l r/l r//
 lower sword No. 1 hops turns next sword lowered

1 hl/r hr/ 1 r/l r/ 1 r/ 1 hl/r hr/ 1 r//
 No. 2 No. 3

1 r/l r/ 1 hl/r hr/ 1 r/l r/l r/l hl//
 No. 4 No. 5

1 hr/ 1 r/l r/l r/l hl/r hr/l r/l r//
 No. 6

and exposed
two
 (as 6 goes over) the change of reel & ex frames inserted!

NE. 4 preparatory steps. Man steps from outside to inside, right foot over first then anticlockwise turn to get straight. Sword that is gone over is lowered by man behind to mid shin level - horizontal - turn after cross.

Open Ring - 8b

Double Under Twice - 16b - each is done in 14 steps. Follows immediate 1&2 arch first, opposites, 4&5 repeat. Can not say that in this or Double Over that there is as much attempt at orientation but this might be due to the filming needs.

Arch holds up sword at arms length - sword going under at chest level - couples going through bend forward

On 2nd step - arch over head of 1st couple

4th - 1st cu under start to turn out

8th - carry sword back over over the original arch couple

10th - middle couple straight

12th - 1st arch begin to str-ighten

14th - all straight and anticipating next movement

In repeat start open ring movement on 12th.
 Open ring till end of musical phrase - 4 steps (4 of men 6 steps or Double Over & Open Ring Twice - 32b - 1&2 sword down first then opp 4&5, 1st couple does 4 steps then over, left foot first - 2nd couple does 8 steps & over, 3rd couple 14 steps & over so that 1st 2 steps of open ring is used. 1st couple sword goes over horiz at midchest height. Sword down, couple is bent, back horiz, sword goes to about mid set for 1st couple & only little further for 2nd, turn in to face c & walk back over 1/2 way back before going over, going over so that in place starting to ring when over.

Lingdale 2

Lock - right & left - take all 8b to make - bend body a little, crouching coming in.

Display - raise lock by no 1 in right hand, palm forward, rest put left hand on right shoulder in front except No.1 who keeps left hand free.

d.f. put hands on shoulders as let go lock to have it raised.

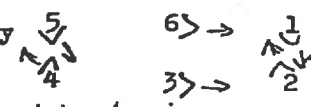
Draw - lower, turn horiz, all grab hilt as it comes down, at head level, steadily lowered to face level, draw on last beat & all stop, turning to face centre.

FIGURE TWO

All start face clockwise - high salute

High clash - 8b - some frames missing (about 4bs worth)

Circular Hey - 16b - coming out of clash, form column facing front & continue turning till top & bottom couple facing cross set & middle facing up thus in 4 preparatory steps.



End couples start circular hey by passing right shoulders *simultaneously* if 4 & 5 pass by hilt they must need 4 more steps before the blades meet and

Although bottom couple cross at start they can only come in progressively Thus top couple 1&2 are in place in 12b but others take 14b (this incl initial 4 steps) 4&5 put swords over right shoulders, face up & walk backwards 4 steps in bars 15-16. Others join both swords just below waist level, standing upright, facing partner

Windows - 24b - THE COUPLES DO NOT IN FACT FORM WINDOWS but keep swords together, bend forward so that swords horiz at mid-shin level partners are facing. I assume that the windows edge torn to make room for couple going over to go down at end. *follow up with 4 steps over* Bars 1-8 bottom couple approach 8 steps, over first pair of swords & over second pair without extra steps between.

1 r/l r/l r/l r/hr l/hl r/hr l/hl r//
over over

9-16 2nd couple, stand, face up, sword sloped over right shoulder, walk back 4 steps, forward 4 & over - same step as above.

17-24 3rd couple ditto.

Mark Time - 8b - all stand up holding swords together & mark time very quietly.

Roll & Low Basket - 8b - each couple do one roll, 4 steps, bottom couple down, other 2 couples up then into walk round clockwise & low basket

Low Clash - 8b - same direction

Ping - 8b

Over Neighbour's Sword - 24b -

each man takes 8 steps, 4 bars. man in front lowers sword almost to ground level. Stepping

1 r/l r/hr l/hl r//

left foot over first. Half turn to face back completed as left foot goes over, completing turn ~~xxxxxxx~~ Believe that man raises own sword & 1/2 turn anticlockwise under it to face back, hop over, getting straight by raising neighbour's sword, which helps next man to turn ready to go over. Must check this. (Does Lingdale always go over anticlockwise?) (Ring or straight into Lock?)

Lock - same lock made in 4 bars, held up for 12 bars.

Draw - 8b.

Lingdale 3.

FIGURE THREE

Start all face anticlockwise with sword in left hand.

Point down. tips touch ground in centre

High Salute - point up tips touch. (other figs start with swords held up for a while) These on two chords.

High Clash - left hand, anticlock, - 8b - turn in & face back, change hand

High Basket - right hand - 8b - clockwise - ending by moving into Arche position still keeping swords up.

Arches - 1v2, 6v3, 5v4. sword up & crossed with partner near tip, left hand resting on side of hip, mark time hardly raising foot at all, very quiet

1. - 8b - stationary facing partner

2. - 4b - bottom couple come up middle side-by-side, shouldering sword, while other arches shuffle down a place. fall into top place all in 8 steps.

4b - next couple ditto

4b - last couple ditto

4b - all stationary 4 bars.

3. - 8b - bottom couple come up under arches, cast out & down outside back to place - 16 steps - at 8 steps are 1/2 way round. Rest mark time on spot.

8b - middle couple up under top arch, cast, up under bottom arch etc

8b - top couple cast & up middle

4. 8b - all face, mark time & clash tips with partner.

Tommy & Betty join in at 3 going round like the other couples but out of phase ie coming up middle when men going down outside. They have extra turn round in 4 all to themselves.

Open Ring - 8b

One man over - 8b each & 8b open ring following (even last time?)

Figure not like did at Albert Hall, much simpler as only one man over here rather like Papa Stour figure?

Ring steps: man goes across middle of set to other side, sword down is that 2 to the left, which moves forward (how much) to meet

Stepping

1 r/l r/hr l/hl r/hr l/hl r/l r/l r//
over back

Men holding sword down do not turn, others do not cross but stand facing

No. 4 over 1st between 1 & 2

1 2nd 4 & 5

5 3rd 3 & 2

2 4th

Other Two do not go

Lock - 8b to make - 8b up & Betty comes in middle

Draw - 8b lowered over Betty's head.

There is also like ... as Refin / ...